

Worth Home Products

The New Standard in Classic Homes



Sometimes it's better to blend in.

You know how difficult it is to blend functional requirements with style. Take large metal return-air grilles. To work effectively, they have to be centrally located and unobstructed. The fact is, these unsightly grilles have always been a design challenge.

But now you have an inexpensive way to upgrade the look of any home project. Worth Home Products sets a new standard with its wooden return-air grilles, providing a quality alternative to stamped metal grilles. They paint beautifully to blend into any wall or ceiling.

What's more, our design combines style with safety, versatility and performance. Its patent-pending locking system provides a secure installation

and a simple operation for filter replacement, cleaning or duct inspection – all with no moving hardware.

Using a Worth Home Products' grille also makes economic sense. Our superior design and construction requires no special preparation to the grilles or modifications to standard return-air openings. And of course, they are engineered to ensure proper air flow so HVAC systems can work effectively. Site-built grilles are no match.

Sometimes, it's the subtle details that make a home stand out.

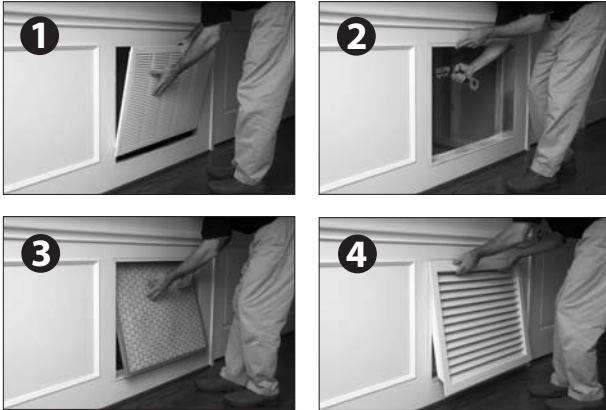


Product Description

Our grille is a two-part assembly – a removable wooden grille that fits inside our standard-sized metal frame. All styles are removable for easy filter replacement, duct inspection or cleaning, and install securely with our patent-pending locking system.

How To Install

Follow these simple steps to install your wooden grille in any wall or ceiling. We recommend you prime and paint your grille.



- 1** After removing your old metal grille, simply insert our metal frame into the prepared opening.
- 2** Screw the frame into the adjacent studs. The side flanges will help ensure a flush mount.
- 3** Insert a filter if your system requires one at the return-air opening.
- 4** Then simply guide the grille into place assisted by the frame's built-in spring.

The Worth Advantage

Backed by our satisfaction guarantee, no other wooden grille provides superior quality, style, performance or safety. Visit our web site for details and testimonials.

Product Benefits

- Blends in beautifully to any décor
- Hides the filter or duct space better
- Precision engineered for air flow
- Cleans easily

Available Sizes

We stock the most popular sizes of return-air grilles used today. Custom orders are also available, so check with us, your retailer, design professional or AC contractor for updates, price quotes and lead times.

Required Opening

The actual size of our metal frame is the same as the stated size for the width but 1/4 inch longer for the length. The depth of the frame is 3 inches for a filter frame and 2 1/2 inches for a non-filter frame. The recommended return-air opening is 1/4 inch larger than the actual dimensions of the metal frame. (See chart below).

Size	Exterior Casing	Metal Frame	Minimum Duct Opening
14W x 14H	16-3/16 x 15-9/16	14 x 14-1/4	14-1/8 x 14-3/8
16W x 25H	18-13/16 x 26-9/16	16 x 25-1/4	16-1/8 x 25-3/8
20W x 30H	22-13/16 x 31-9/16	20 x 30-1/4	20-1/8 x 30-3/8

* +/- 1/8 inch tolerance

More Information

Please call or visit us on the web to find out more information, including fax requests and downloads of the following:

- Installation instructions
- Free area & air flow performance
- Warranty & handling precautions
- Return-air duct opening requirements
- Product reviews
- Vent applications

You can purchase a Worth Home Products A/C grille from: